

# RADIO MODEMS RANGE



Wireless data transmission



# adeunis

WIRELESS PRODUCTS & SOLUTIONS

# Radio modems description

Integrated antenna version or TNC connector for external antenna



Status LEDs



Configuration and service through buttons

Integrated DIN-Rail mount



Power supply jack connector

SubD9 socket - RS232/485/USB

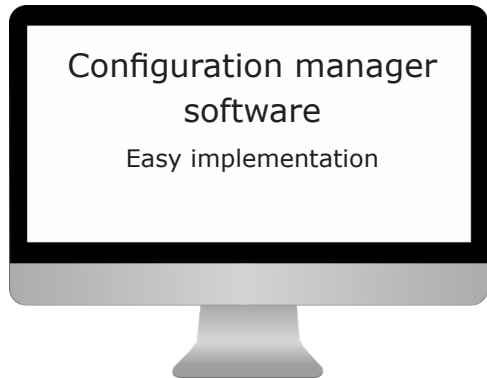
## IP53 and IP67 options

Water and dust protection



## Configuration manager software

Easy implementation



# Markets - Applications

## Industry



- Wireless systems for :
- Industrial machine control
  - Automatic system monitoring
  - Troubleshooting detection
  - Positioning / Tracking
  - .....

## Energy - AMR



- Wireless systems for :
- Energy remote reading
  - Urban heating control
  - Buildings energy management
  - Cartography and regulation
  - .....

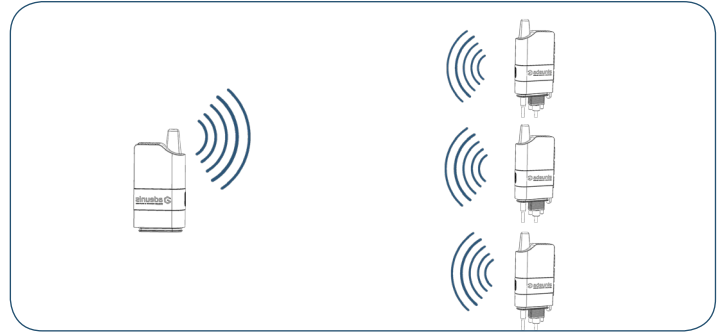


# Communication modes

## Transparent Mode

Data are sent into the air and all products are recipients of the frames transmitted.

- Continuous or packetized data transmission
- Transmission integrity control (packetized mode)



## Addressed Mode

Data are sent into the air and only the addressee receives the frames from the transmitting product.

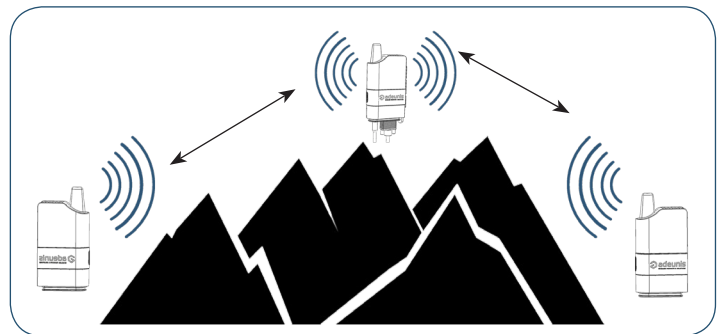
- Continuous or packetized data transmission
- Transmission integrity control (packetized mode)
- Secured packet protocol (ACK)



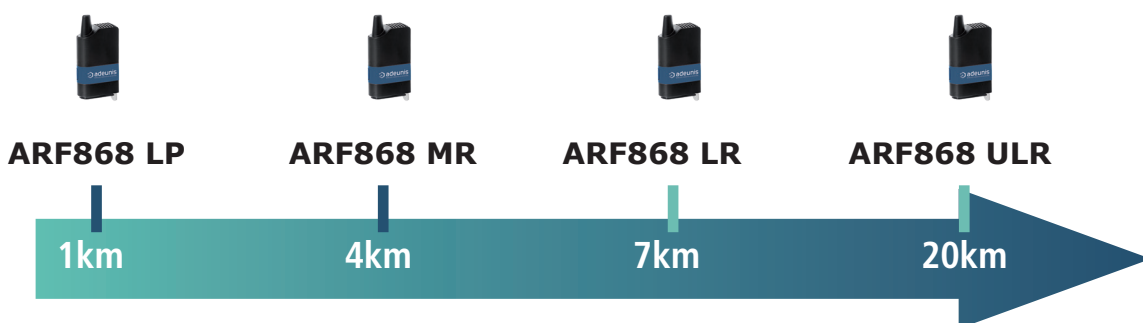
## Repeater Mode

Data are sent into the air and are repeated after checking the availability of the radio channel.

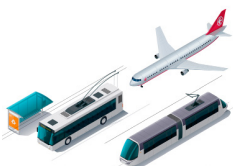
- Packetized data transmission
- Transmission integrity control



# Ranges

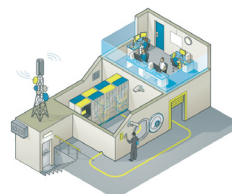


## Transportation



- Wireless systems for :
- Control of traffic light priority
  - Information for travellers
  - Electronic displaying
  - car park and vehicle management
  - .....

## Security & control



- Wireless system for :
- Building security
  - Access control to sites and zones
  - Emergency beacons
  - Home automation applications
  - .....



# Technical specifications

Products	ARF868 LP	ARF868 MR	ARF868 LR	ARF868 ULR
				
Range	1 km	4km	7km	20km
Integrated antenna reference	ARF7943AA	ARF7942AA	ARF7941AA	ARF7940AA
External antenna reference	ARF7943BA	ARF7942BA	ARF7941BA	ARF7940BA
Radio characteristics				
Frequencies	863-870MHz	863-870MHz	863-870MHz	863-870MHz
RF Power	14dBm	14dBm	27dBm	27dBm
Power	25mW	25mW	500mW	500mW
Sensibilité RF	-112dBm	-120dBm	-112dBm	-120dBm
RF data rates	2.4 to 57.6kbps	2.4 to 57.6kbps	2.4 to 57.6kbps	2.4 to 57.6kbps
Channel number	14dBm/2.4kbps : 506 14dBm/9.6kbps : 249	14dBm/2.4kbps : 506 14dBm/9.6kbps : 249	27dBm/2.4kbps : 19 14dBm/2.4kbps : 506	27dBm/2.4kbps : 19 14dBm/2.4kbps : 506
Consumption	100mA (TX@14dBm / 12V)		240mA (TX@27dBm / 12V)	
Modem interface				
Serial data rates	1.2-115.2kbps	1.2-115.2kbps	1.2-115.2kbps	1.2-115.2kbps
Serial port	RS232 / RS485 / USB	RS232 / RS485 / USB	RS232 / RS485 / USB	RS232 / RS485 / USB
Modes	Transparent Addressed Repeater Network	Transparent Addressed Repeater Network	Transparent Addressed Repeater Network	Transparent Addressed Repeater Network
Configuration	Adeunis RF software AT Com- mands	Adeunis RF software AT Com- mands	Adeunis RF software AT Com- mands	Adeunis RF software AT Com- mands
General information				
Dimensions	135 x 75 x 35mm (Integrated anten- na)	135 x 75 x 35mm (Integrated anten- na)	135 x 75 x 35mm (Integrated anten- na)	135 x 75 x 35mm (Integrated anten- na)
Casing	IP41	IP41	IP41	IP41
Weight	155gr	155gr	155gr	155gr
Operating temperatures	-30° to -70°C	-30° to -70°C	-30° to -70°C	-30° to -70°C
Standard	EN300-220 EN301-489 EN60950	EN300-220 EN301-489 EN60950	EN300-220 EN301-489 EN60950	EN300-220 EN301-489 EN60950

## adeunis

283 rue Louis Néel - Parc Technologique Pré Roux  
38920 CROLLES - France  
Tél. : +33 (0)4 76 92 07 77 - Fax : +33 (0)4 76 04 80 87  
www.adeunis.com - arf@adeunis.com





**Delmation**  
products



## Delmation Products

Blauw-roodlaan 300  
2718 SK Zoetermeer  
079 - 342 20 41

[www.delmation.nl](http://www.delmation.nl) | [info@delmation.nl](mailto:info@delmation.nl)