

LoRa-WAN wireless IP-65 GPIO transceiver

ELT-1, IP-65

- Analog 0-2,56V
- Digital
- Pulse counter
- Direct connection to temperature sensor
- Direct connection to S0 outputs
- Direct connection to Decagon moisture sensor
- NFC for easy configuration

Size: 94 x 59 x 35 mm

Approx. range: 8km*

Battery life: 10 years**

The ELT-1 is a 1-channel GPIO wireless transceiver for LoRa-WAN. It is configurable with NFC via a mobile app.

The module can be configured to measure Analog 0-2.56V, Digital 2.7-5V, or count pulses.

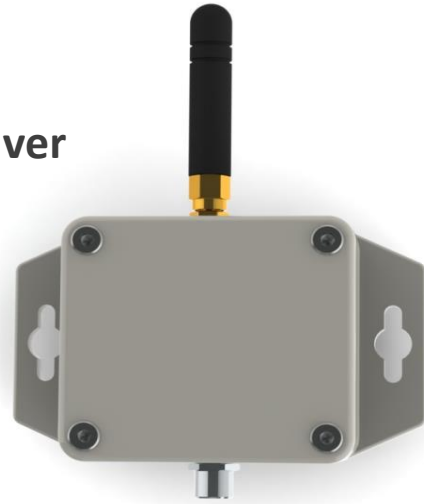
The module can also provide power to e.g. S0 outputs or sensors. The power-on time before data sampling can be adjusted.

All modules have a global unique EUI---64 serial number.

The module is powered by lithium batteries, and the battery status is reported back to the receiver.

* LoRa™ modulation SF10

** Depending on interval



ELT-1 is a general LoRaWAN™ device for measuring analogue or digital signals. ELT-1 can for example be used together with electricity meters, flow meters, analogue sensors, moisture sensors or temperature sensors. ELT-1 is enclosed in an IP67 box and is designed to be outside.

Inside the ELT-1 you will find three internal sensors: a temperature sensor, a humidity sensor and an accelerometer. ELT-1 is powered by a 3,6V AA lithium battery. The Battery life is estimated to be up to 10 years but depends on sample interval, transmit interval, data rate and environmental factors. All Elsys sensors are equipped with NFC (Near Field Communication) for easy configuration with an Android phone. With the application "Sensor Settings", you can change sample rate, data rate, encryption keys, triggers, activation and much more.

