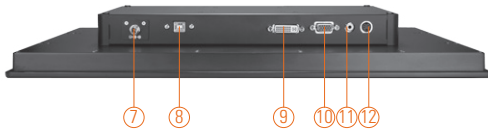
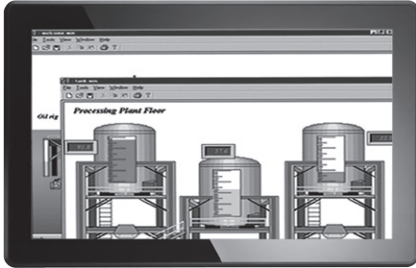


# P6187W

18.5" TFT Widescreen Industrial LCD Monitor



- |                 |                         |
|-----------------|-------------------------|
| 1. Exit         | 7. DC power input       |
| 2. Menu         | 8. T/S port             |
| 3. SEL-         | 9. DVI (Only for DVI-D) |
| 4. SEL+         | 10. VGA                 |
| 5. Power LED    | 11. Video (CVBS)        |
| 6. Power switch | 12. S-video             |

## Features

- 18.5" TFT 300 nits WXGA LCD
- NEMA 4/12 (IP65)- compliant panel mounting flat panel monitor
- Supports panel mount, wall mount and VESA mount
- Multi touch 18.5" projective capacitive
- Supports full range screw-type (locked) AC-in or 24V DC-in (option)
- Supports multi-signal inputs: VGA, S-video, Video and DVI



▲ Modularized design

## Introduction

The P6187W is a slim with flat front bezel design industrial LCD monitor, which adopts 18.5-inch 300 nits WXGA LCD display and supports multi-signal interfaces including DVI, VGA, S-Video, Video. Featuring NEMA 4/12 & IP65 compliant front bezel, screw-type adaptor plug design, and 12/24V DC-In means it is fit for all kinds of industrial environments. Moreover, the P6187W supports panel, wall or VESA FPMPMI (Video Electronics Standards Association Flat Panel Monitor Physical Mounting Interface) mounting. With the compact mechanism design, users can enjoy free from space constraint. It is especially suitable for POI/POS, excellent HMI and all kinds of heavy-duty industrial fields.

## Specifications

Front Bezel	NEMA 4/12 (IP65)-compliant, flat front bezel	
Mounting	Supports panel mount, wall mount and VESA mount FPMPMI mounting (video electronics standards association Flat Panel monitor physical mounting interface)	
LCD Panel	Display	18.5" TFT LCD
	Max. Resolution	1366 x 768
	Max. Colors	16.7M
	Active Area (mm)	409.8 x 230.4
	Pixel Pitch (mm)	0.3 x 0.3
	Response Time	5ms
	Backlight	LED
	Backlight MTBF	50,000 hrs
	Viewing Angle (H/V)	170°/160°
	Contrast Ratio	1000 (TYP.)
Brightness (cd/m <sup>2</sup> )	300 nits	
Display Control	OSD (on screen display)	
Display Mode	VGA 640 x 350 (70Hz), VGA 640 x 480 (60/72/75Hz), VGA 720 x 400 (70Hz), SXGA 800 x 600 (60/72/75Hz), XGA 1024 x 768 (60/72/75Hz), WXGA 1366 x 768 (60Hz)	

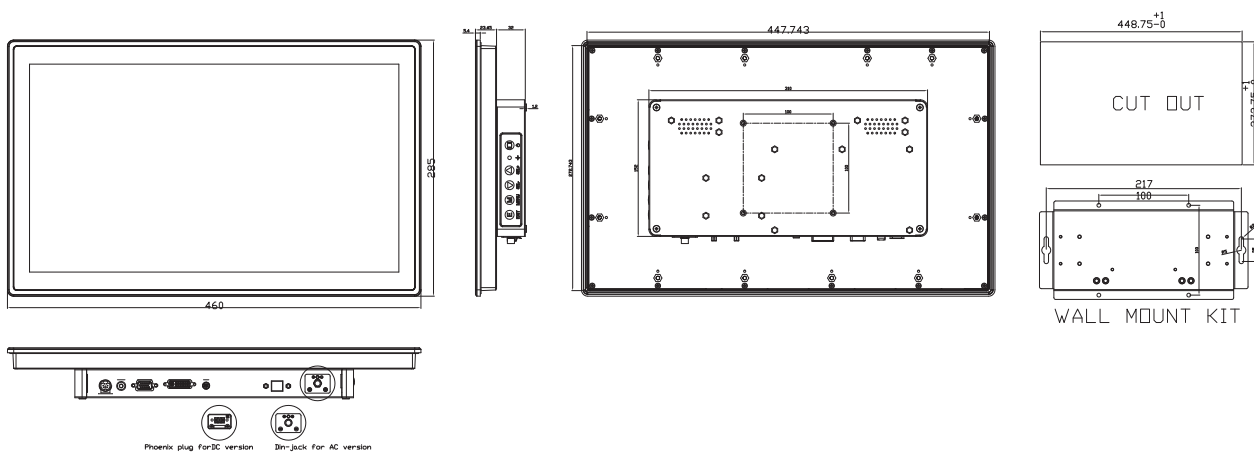
## Specifications

Input Signal	VGA Video: R.G.B Analog 0.7v Peak-to-Peak Video S-video DVI (Only for DVI-D) Touchscreen: USB interface
I/O Connectors	1 x USB for touchscreen version 1 x VGA input 1 x RCA for video 1 x S-video for video 1 x DVI 1 x Screw-type DC power input
Power Adapter	Screw-type external AC/ DC power adapter
Touchscreen	Multi touch 18.5" projective capacitive
Dimensions	460 mm (18.11") (W) x 57 mm (2.44") (D) x 285 mm (11.22") (H)
Packing Dimensions	595 mm (24.43") (W) x 190 mm (7.48") (D) x 490 mm (19.29") (H)
Weight (net/gross)	6.0 kg (12.22 lb)/ 8.0 kg (17.75 lb)
Environment	Operating temperature: 0° ~ +55°C (+32°F ~ +131°F) Storage temperature: -20°C ~ +60°C (-4°F ~ +140°F) Relative humidity: 20%~90%@40°C, non-condensing
Certificate	CE

## Ordering Information

P6187W		
AC Power	Panel Mount Monitor	
	Capacitive (USB)	P6187WPC-AC-U-US-EU
	Glass	P6187WPG-AC-US-EU
24VDC Power	Panel Mount Monitor	
	Capacitive (USB)	P6187WPC-24VDC-U
	Glass	P6187WPG-24VDC

## Dimensions



Delmation Products BV  
T +31 (0)79 342 2041  
info@delmation.nl  
www.delmation.nl

