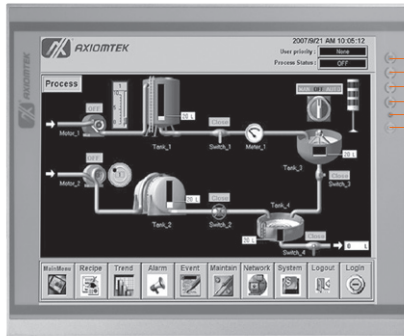


# P6171

17" SXGA TFT Industrial LCD Monitor

NEW



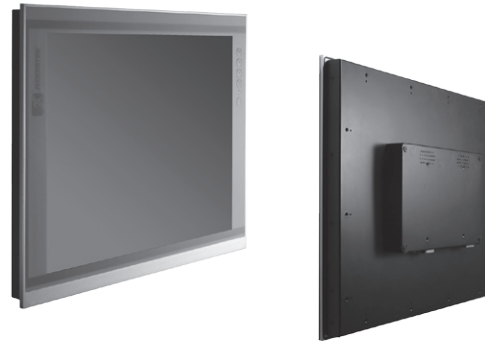
1. Menu
2. SEL+
3. SEL-
4. Exit
5. Power LED
6. Power Switch



- |                            |  |
|----------------------------|--|
| 7. RS-232 or USB for Touch | 10. DisplayPort                            |
| 8. DVI-D                   | 11. Screw type or Phoenix type power input |
| 9. HDMI                    |  |

## Features

- 17" TFT SXGA LED backlight LCD
- NEMA 4/12 (IP65)- compliant panel mounting flat panel monitor
- Supports panel mount, wall mount, rack mount and VESA arm
- Resistive touchscreen
- Supports full range screw-type (locked) AC-in or 12V/24V DC-in (option)
- Supports multi-signal inputs: DVI-D, DisplayPort and HDMI



▲ Ultra-slim mechanism design

## Introduction

The P6171 is an ultra slim industrial LCD monitor, which adopts 17-inch 350 nits SXGA LED backlight LCD display and supports multi-signal interfaces including DVI, DisplayPort and HDMI. Featuring NEMA 4/12 & IP65 compliant front bezel, screw-type adaptor plug design, and 12/24V DC-In means it is fit for all kinds of industrial environments. Moreover, the P6171 supports panel mount, wall mount, rack mount or VESA FPMPMI (Video Electronics Standards Association Flat Panel Monitor Physical Mounting Interface) mounting. With the compact mechanism design, users can enjoy free from space constraint. It is especially suitable for POI/POS, excellent HMI and all kinds of heavy-duty industrial fields.

## Specifications

Front Bezel	NEMA 4/12 (IP65)-compliant, metal front bezel	
Mounting	Panel mount, wall mount, rack mount or VESA FPMPMI mounting (video electronics standards association Flat Panel monitor physical mounting interface)	
LCD Panel	Display	17" TFT SXGA LED
	Max. Resolution	1280 x 1024
	Max. Colors	16.7M
	Active Area (mm)	337.92 x 270.33
	Pixel Pitch (mm)	0.264 x 0.264
	Response Time	5ms
	Backlight	LED backlight
	Backlight MTBF	30,000 hrs
	Viewing Angle (H/V)	170°/160°
	Contrast Ratio	1000 (TYP.)
Brightness (cd/m <sup>2</sup> )	350 nits	
Display Control	OSD (on screen display)	
Display Mode	VGA 640 x 350 (70Hz), VGA 640 x 480 (60/72/75Hz), VGA 720 x 400 (70Hz), SVGA 800 x 600 (60/72/75Hz), XGA 1024 x 768 (60/72/75Hz), SXGA 1280 x 1024 (60/72/75Hz)	

**Delmation Products BV**  
**T +31 (0)79 342 2041**  
**info@delmation.nl**  
**www.delmation.nl**

\* All specifications and photos are subject to change without notice.



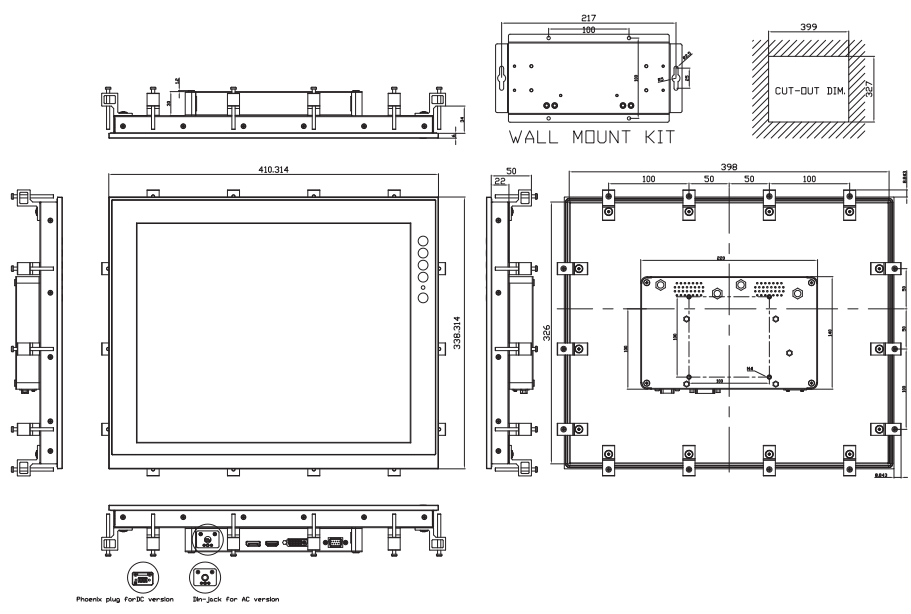
## Specifications

Input Signal	DVI-D DisplayPort HDMI Touchscreen: Serial RS-232 or USB interface
I/O Connectors	1 x RS-232 or USB for touchscreen version 1 x DVI-D 1 x DisplayPort 1 x HDMI 1 x Screw-type DC power input
Power Adapter	Screw-type external AC / DC power adapter
Touchscreen	Thickness Resistive: 3.2 mm
	Light Transmission Resistive: 80%
	Power Consumption Resistive: +5V @ 100mA
	Touch Life Resistive: 35million touches Controller interface: RS-232 D-type 9pin male connector or USB
Dimensions	410.31 mm (16.15") (L) x 28 mm (1.10") (H) x 38.31 mm (1.32") (W)
Packing Dimensions	510 mm (20.08") (L) x 532 mm (20.94") (H) x 186 mm (7.32") (W)
Weight (net/gross)	3.8 kg (8.38 lb)/ 6.56 kg (14.46 lb)
Environment	Operating temperature: 0° ~ +50°C (+32°F ~ +122°F) Storage temperature: -20°C ~ +60°C (-4°F ~ +140°F) Relative humidity: 20%~90%@40°C, non-condensing
Certificate	CE

## Ordering Information

AC Power	Resistive (RS-232)	P6171DPR-AC-RS-US-EU
	Resistive (USB)	P6171DPR-AC-U-US-EU
	Glass	P6171DPG-AC-US-EU
12V/24VDC Power	Resistive (RS-232)	P6171DPR-DC-RS
	Resistive (USB)	P6171DPR-DC-U
	Glass	P6171DPG-DC

## Dimensions



Delmation Products BV  
T +31 (0)79 342 2041  
info@delmation.nl  
www.delmation.nl

Overview

Fanless Touch Panel Computers

Heavy-duty Fanless Touch Panel Computers

Industrial Touch Panel Computers

4 Industrial Touch panel Monitors

Infotainment Touch Panel Computers

Healthcare & Medical Solutions

Open Frame Panel Computers

Accessories

