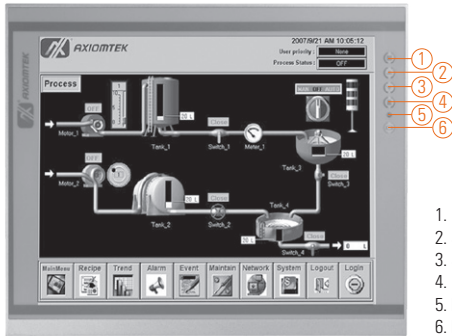


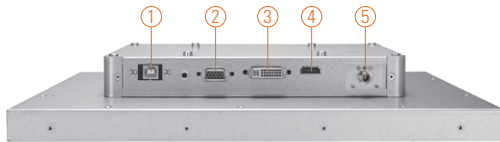
P6151P

15" XGA TFT Industrial Touchscreen Monitor

NEW



1. Menu
2. SEL+
3. SEL-
4. Exit
5. Power LED
6. Power Switch



- | | |
|-------------|----------|
| 1. T/S port | 4. HDMI |
| 2. VGA | 5. Power |
| 3. DVI-D | |

Features

- 15" TFT 420 nits high brightness XGA LCD
- Resistive touchscreen
- Supports full range screw-type (locked) AC-in or 12V/24V DC-in (option)
- HDMI, DVI-D and VGA with multi-signal inputs
- Built-in speakers



▲ Modularized design

Introduction

The P6151 is an ultra slim industrial LCD monitor, which adopts 15-inch 420 nits XGA LED backlight LCD display and supports multi-signal interfaces including DVI, VGA and HDMI. Featuring, screw-type adaptor plug design, and 12/24V DC-In means it is fit for all kinds of industrial environments. With the compact mechanism design, users can enjoy free from space constraint. It is especially suitable for POI/POS, excellent HMI and all kinds of heavy-duty industrial fields.

Specifications

Front Bezel	Open frame monitor	
LCD Panel	Display	15" TFT XGA LED
	Max. Resolution	1024 x 768
	Max. Colors	16.7M
	Active Area (mm)	304.128 x 228.096
	Pixel Pitch (mm)	0.297 x 0.297
	Response Time	16ms
	Backlight	LED backlight
	Backlight MTBF	30,000 hrs
	Viewing Angle (H/V)	160°/160°
	Contrast Ratio	800 (TYP.)
Brightness (cd/m ²)	420 nits	
Display Control	OSD (on screen display)	
Display Mode	VGA 640 x 350 (70Hz), VGA 640 x 480 (60/72/75Hz), VGA 720 x 400 (70Hz), SVGA 800 x 600 (60/72/75Hz), XGA 1024 x 768 (60/72/75Hz)	
Input Signal	DVI-D VGA HDMI Touchscreen: Serial RS-232 or USB interface	



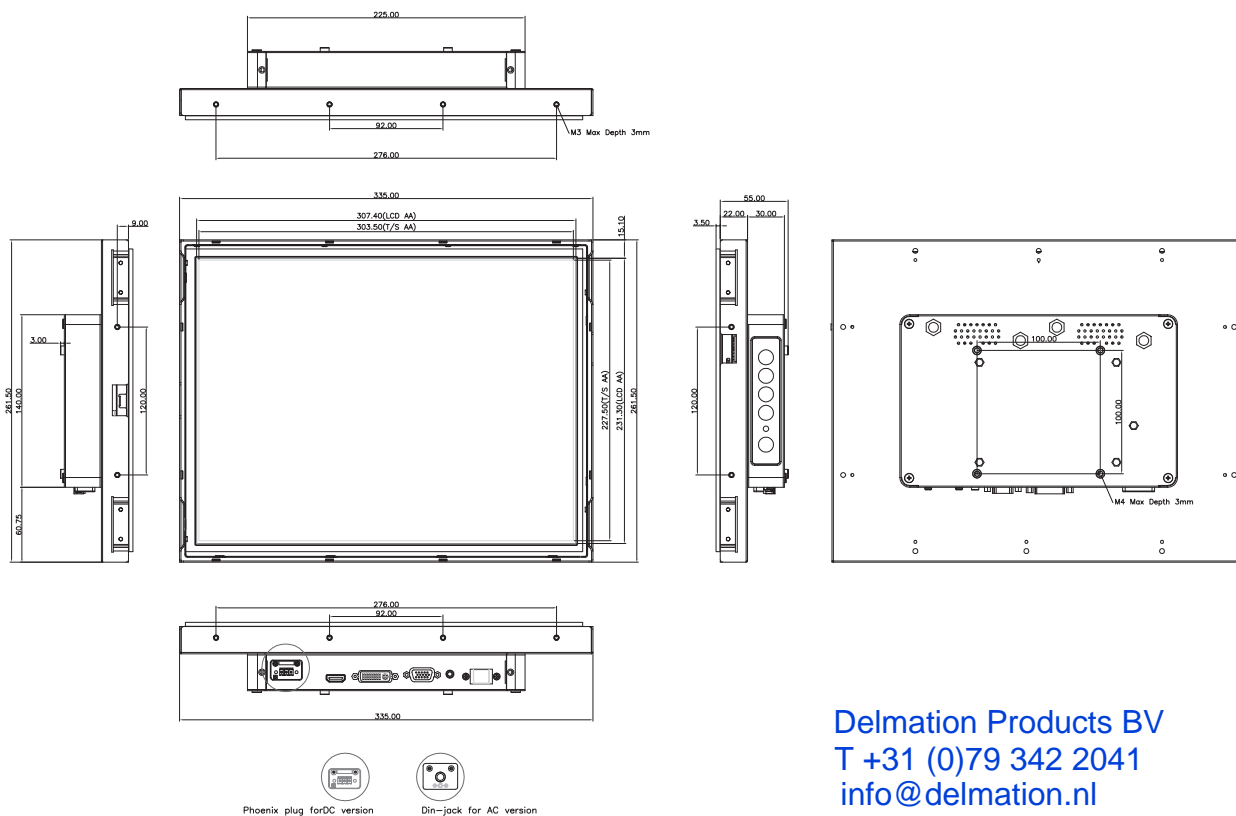
Specifications

I/O Connectors	1 x RS-232 or USB for touchscreen version 1 x DVI-D 1 x VGA 1 x HDMI 1 x Screw-type DC power input
Power Adapter	Screw-type external AC / DC power adapter
Touchscreen	Thickness Resistive: 3.2 mm
	Light Transmission Resistive: 80%
	Power Consumption Resistive: +5V @ 100mA
	Touch Life Resistive: 35million touches Controller interface: RS-232 D-type 9-pin male connector or USB
Dimensions	335 mm (13.19") (W) x 58.5 mm (2.30") (D) x 261.5 mm (10.29") (H)
Packing Dimensions	TBD
Weight (net/gross)	TBD
Environment	Operating temperature: 0°C ~ +50°C (+32°F ~ +122°F) Storage temperature: -20°C ~ +60°C (-4°F ~ +140°F) Relative humidity: 20%-90% @ 40°C, non-condensing
Certificate	CE

Ordering Information

AC Power	Resistive (RS-232)	P6151PR-AC-RS-US-EU
	Resistive (USB)	P6151PR-AC-U-US-EU
	Glass	P6151PG-AC-US-EU
12V/24VDC Power	Resistive (RS-232)	P6151PR-DC-RS
	Resistive (USB)	P6151PR-DC-U
	Glass	P6151PG-DC

Dimensions



Delmation Products BV
T +31 (0)79 342 2041
info@delmation.nl
www.delmation.nl

Overview

Fanless
Touch Panel
Computers

Heavy-duty
Fanless Touch
Panel Computers

Industrial
Touch Panel
Computers

4
Industrial Touch
panel Monitors

Infotainment
Touch Panel
Computers

Healthcare
& Medical
Solutions

Open
Frame Panel
Computers

Accessories

